

MIICRAFT

125/100/80/50/100X

The Most Accurate Optical 3D Printer with Productivity



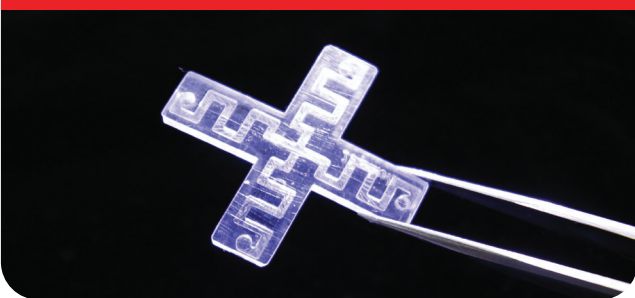
Jewelry



Dental



Research



Creation



Printing Volume

- Up to 125x70mm XY printing size
- 2 arches / 50+ rings by one print

High Resolution & Accuracy

- Full HD UV LED projection engine with 30um XY resolution
- Excellent optical system designed for 3DP with high image quality

Flexible & Open System

- Open with the widest range of resins
- Flexible and editable parameter setting

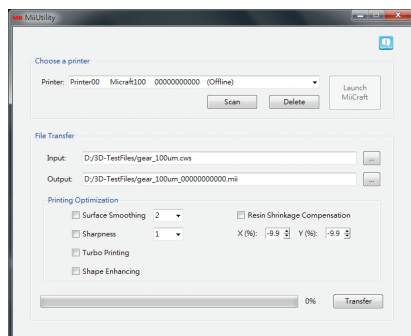
Superior Optical System

- Available in UV365nm / 405nm LED configurations with high Optical efficiency
- DLP technology with entire layer exposed by a single fixed image pattern

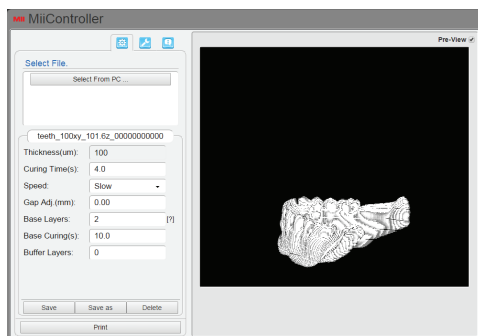
Powerful Software

MiiUtility(PC / Window 7 and above)

- Multi Printer Searching & Accessing
- Printing File Transfer:
Compatible with .SLC, .ZIP(PNG), .CWS,...
- Printing Optimization
 - Surface Smoothing
 - Edge Enhancement & Blurring
 - Turbo Printing Speed Mode



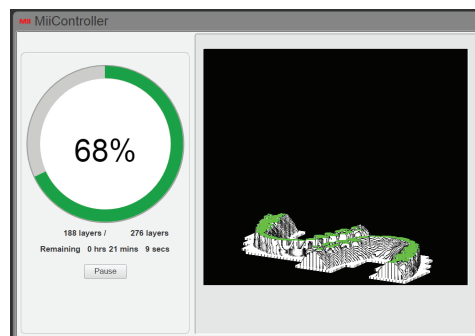
MiiUtility



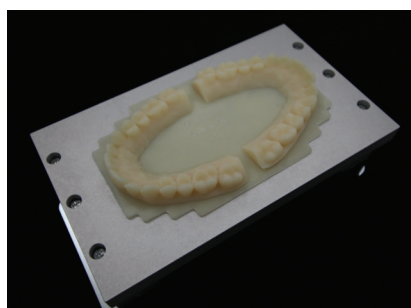
Preview

MiiController (Browser via Ethernet)

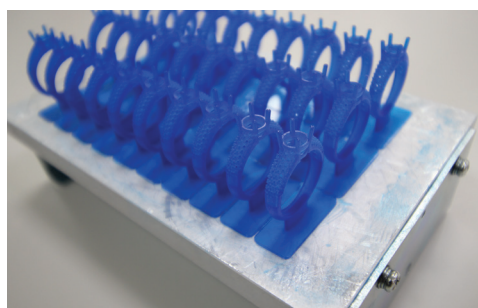
- Printer Control via Ethernet Browsers
- Powerful Customized Printing Parameter Settings
- Direct Printing by USB Flash
- Model Preview & Real Time Printing Status Monitoring



MiiController



2 arches



50+ rings



Flexible Resin Options

Technical Specification

	MiiCraft 125	MiiCraft 100	MiiCraft 80	MiiCraft 50	MiiCraft 100X
Max.Building Size (mm)	125x70x120	102x57.5x120	80x45x120	57x32x120	102x57.5x120
XY Resolution	65 μm	53 μm	41.5 μm	30 μm	53 μm
Wavelength	405nm LED				365nm UV LED
Z-axis Layer Thickness	5~ 200 μm				
Interface	Ethernet Connection				
	USB (Direct Printing)				
File Input	.SLC, . ZIP(PNG), .CWS, .MII				
Printer Size (LxWxH)	43x 43x 59 cm				
Weight	36.5 KG				
Power Input	100~240VAC	50Hz/60Hz	2A		
Packaged Size and Weight	66x66x85 cm / 42.5 KG				
Resin Info	Model Printing		Castable	Research	

*5 Colors of Nano-colorants are Available with BV003



**All Specifications & Designs Subject to Change without Notice.