



Kings
3D Printing

Kings Industrial SLA 3D Printers

New Era of Design and Manufacturing

23 Innovative Technologies, High Speed SLA 3D Printing
Efficient and Cost-Effective Prototyping
Bring Your Idea into Reality



Enhanced Printing Efficiency

- Intelligent high speed scanning system, 15m/s
- Variable laser spot and variable power
- Automatic identifying upskin and downskin with differentiated parameters
- Different Parameter database with different layer thickness

Long-term Printing Stability

- Key components from international top brand: Optowave laser from US, Scanlab galvanometer from Germany
- Full marble structure for enhanced recoating and scanning stability
- High stiffness light recoater to ensure recoating accuracy and efficiency
- Compensation algorithm for multi-head system, ensuring uniform curing in the printing range



Kings
3D Printing

Shenzhen Kings 3D Printing Technology Co., Ltd

Add: No. 67, the Second Industrial Zone of Houting, Zhongting
East Road, Shajing Street, Baoan District, Shenzhen, China

Jiangxi Kings 3D Intelligent Manufacturing Technology Co., Ltd

Add: Xiabu Town, Xiangdong District, Pingxiang City, Jiangxi Province, China

Tel: +86 (0)755-23579161 Mob: +86 133 4296 5481

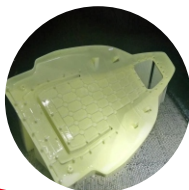
www.kings3dprinter.com Info@kings3dprinter.com

Kings 600Pro**Kings 800Pro**

Max Printing Size	600*600*400mm	800*800*500mm
Machine Size	118cm(W)*129cm(D)*224cm(H)	140cm(W)*149cm(D)*247cm(H)
Rated Power Consumption	1.5KVA	1.8KVA
Machine Weight	about 1200kg	about 1900kg
First Tank Resin	about 240kg	about 500kg
Beam Size (diameter @1/e ²)	0.075–0.8mm (Variable Beam)	0.075–0.8mm (Variable Beam)
Max Scanning Speed	15.0 m/s	15.0m/s
Layer Thickness	0.05mm~0.20mm	0.05mm~0.25mm
Accuracy	L ≤ 150mm, ± 0.1mm; L > 150mm, ± 0.1%*L	L ≤ 150mm, ± 0.15mm; L > 150mm, ± 0.15%*L

Laser Type	Solid-state frequency tripled Nd: YV04
Wavelength	355nm
Power	Resin Surface Power ≥ 300 mW
Variable Beam System	Galvo/Closed-loop
Main structure	Marble recoater frame, marble elevator holder and marble scanning system base
Coating Mode	Intelligent position vacuum recoating
Vertical Resolution Ratio	0.0005mm
Repeat Positioning Accuracy	± 0.01mm
Motion Control System	Closed-loop
Machine Control Software	KINGS 3D control software
Input Data File Format	STL/SLC
Operating System	Windows 7/10
Network Type and Protocol	Ethernet, TCP/IP
Electrical Requirement	200–240VAC 50/60Hz, single-phase, 10A
Ambient Temperature	20–26°C (72–79°F)
Relative Humidity	< 40%, non-condensing
Machine Warranty	2 years (including laser)

* Kings 3D printers vary from 300*350*350mm to 1700*800*600mm.
For info of other machine sizes, please kindly check www.kings3dprinter.com



High Precision
Excellent Smoothness and Details
Versatile Industrial Application