



Adventurer 5M Series

Fast and User-friendly

| Adventurer 5M Pro



| Adventurer 5M



Neotech Co.,Ltd.
บริษัท นีโอดิจิทัล จำกัด
โครงการ เจ.เอส.พี. เพลส4
89/7 ถ.กัลปพฤกษ์ แขวงคลองบางพร
เขตบางบอน กรุงเทพฯ 10150
Tel : 096-140-0420
098-448-4676
E-mail : Sales@print3dd.com

Adventurer 5M series is well-suited for beginners, individual users, families, and educational institutions. Just one-click printing, without complicated operation procedures. Realize your ideas effortlessly.



Full-auto one-click leveling



Maximum speed 600mm/s



Core XY structure

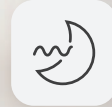


3-second quick-swap nozzle



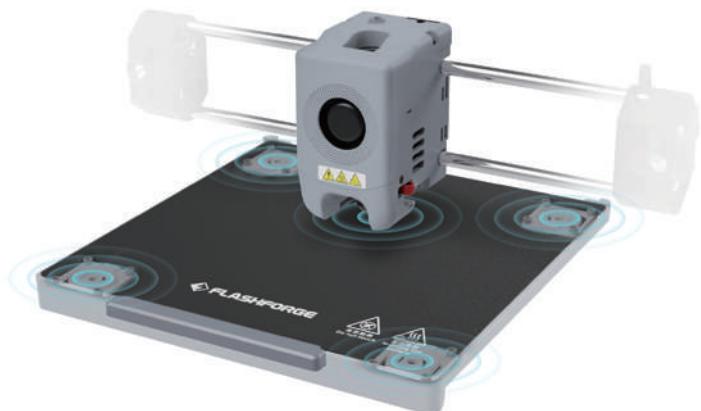
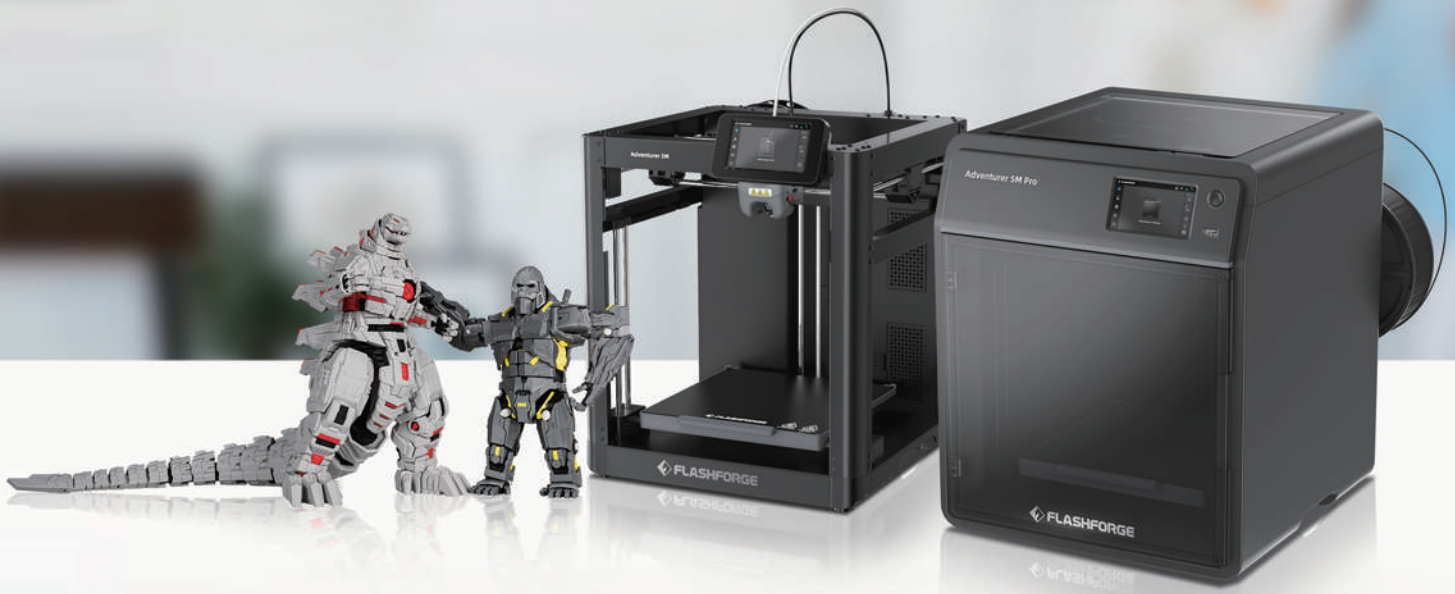
Dual air filtration system

available for Pro version



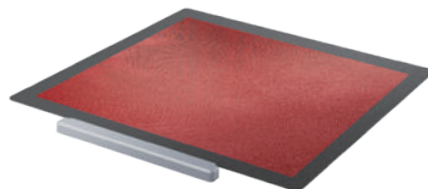
50dB silent printing

available for Pro version



Full-auto one-click leveling, flawless first layer

Adventurer 5M series features a full-auto one-click leveling system. It measures the distance and then calculates the correct offsets. No tools, no manual Z-axis calibration, while ensuring perfect first layer.



Neotech Co.,Ltd.
บริษัท นีโอเทค จำกัด
โครงการ เจ.เอส.พี. เฟส4
89/7 ถ.กัลปพฤกษ์ แขวงคลองบางพราน
เขตบางบอน กรุงเทพฯ 10150
Tel: 096-140-0420
098-448-4676
E-mail : Sales@print3dd.com



10 Minutes

From unboxing to starting printing



Efficiency and quality combined



10 minutes

From unboxing to starting printing



Printing

Maximum speed **600mm/s**

Maximum acceleration **20000mm/s²**



Less waiting time

Nozzle with a flow of **32mm³/s**

50w heating power

200°C heating up in **35 seconds**

Astronaut

104*118*200mm (228g)

Adventurer 5M series

4h10min

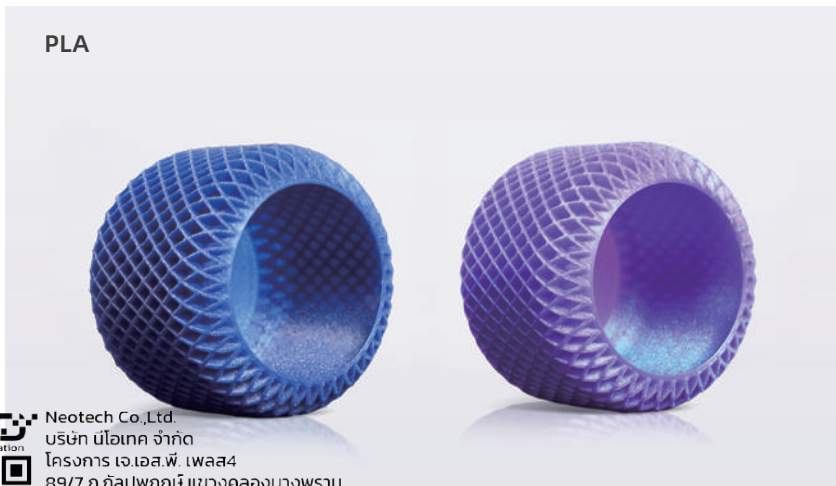
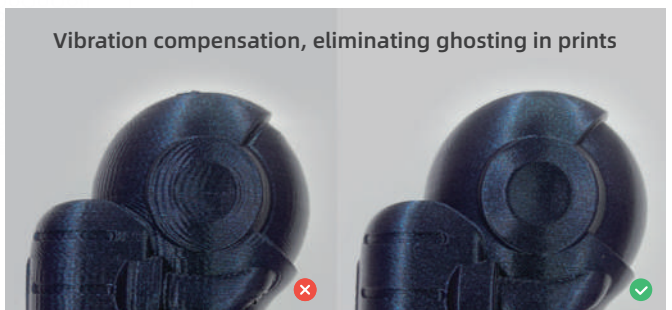
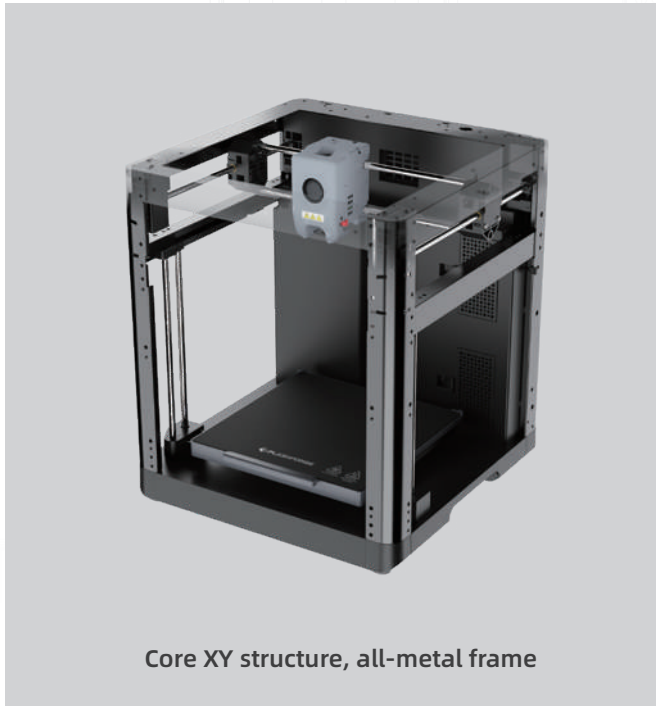
Others

19h20min



Neotech Co.,Ltd.
บริษัท นีโอเทค จำกัด
โครงการ เจ.เอส.พี. เฟส4
89/7 ถ.กัลปพฤกษ์ แขวงคลองบางพราน
เขตบางบอน กรุงเทพฯ 10150
Tel : 096-140-0420
098-448-4676
E-mail : Sales@print3dd.com

Robust designs for superior quality



Neotech Co.,Ltd.
บริษัท เนโอเทค จำกัด
โครงการ เอ.เอส.พี. เฟส4
89/7 ถ.กัลปพฤกษ์ แขวงคลองบางพราน
เขตบางบอน กรุงเทพฯ 10150
Tel: 096-140-0420
098-448-4676
E-mail: Sales@print3dd.com



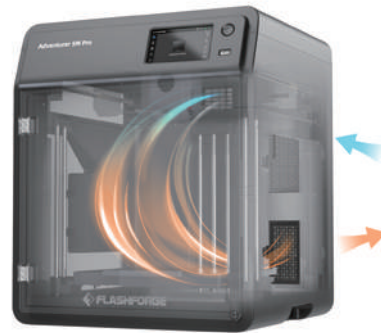
Eco-friendly printing

Adventurer 5M Pro adopts a dual filtration system of internal and external circulation. Dual-layer filtration: HEPA13 and activated carbon, effectively blocking 99% of particles and VOCs, thus protecting your respiratory system.



Internal Circulation Filtration

Continuously filters and circulates the air inside the chamber.
(Suitable for ABS, etc.)



External Circulation Filtration

Draws fresh air from the outside into the chamber while the filtered internal air circulates outside the printer.
(Suitable for PLA/PETG, etc.)



**50dB low-noise printing,
no disturbance to work
or study**

available for Pro version



Neotech Co.,Ltd.
บริษัท นีโอดิจิทัล จำกัด
โครงการ เจ.เอส.พี. เฟส4
89/7 ถ.กัลปพฤกษ์ แขวงคลองบางพราณ
เขตบางบอน กรุงเทพฯ 10150
Tel: 096-140-0420
098-448-4676
E-mail: Sales@print3dd.com

www.print3dd.com

Easy-maintenance nozzle for both rookies and experts

Quick-detachable nozzle requires no tools for change in just 3 seconds

Various nozzle diameter (0.25/0.4/0.6/0.8mm) options suitable for both high-precision and high-efficiency mode



Remote Camera Monitoring

available for Pro version

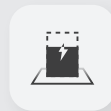


Filament Run-out Reminder



Automatic Shutdown

available for Pro version



Power Loss Recovery



Flexible PEI Steel Plate



Integrated Printing Management

Adventurer 5M Pro

Enclosed 3D printer equipped with a dual filtration system, suitable for use in closed environments such as study rooms and classrooms



Adventurer 5M

Open 3D printer, suitable for use in open and well-ventilated environments



Neotech Co., Ltd.
บริษัท เนotech จำกัด
โครงการ เอ็ม 5M พ. 1 พ. 2564
89/7 ถนนสุขุมวิท แขวงคลองเตยเหนือ เขตวัฒนา
กรุงเทพมหานคร 10150
Tel : 096-140-0420
098-448-4676
E-mail : Sales@print3dd.com

Parameters

Machine Name	Adventurer 5M Pro	Adventurer 5M
Extruder	Direct drive; Qty: 1	Direct drive; Qty: 1
Filament	*PLA/*PETG/*TPU (0.4mm nozzle) ABS/ASA PLA-CF/PETG-CF (0.6/0.8mm nozzle) <small>Note: Materials marked with * are recommended for printing.</small>	*PLA/*PETG/*TPU (0.4mm nozzle) PLA-CF/PETG-CF (0.6mm nozzle) <small>Note: Materials marked with * are recommended for printing.</small>
Nozzle Diameter	0.4mm/0.6mm/0.8mm/0.25mm	0.4mm/0.6mm/0.8mm/0.25mm
Extruder Temperature	280°C	280°C
Platform Temperature	110°C	110°C
Build Volume	220*220*220mm	220*220*220mm
Speed	Max traveling speed: 600mm/s	Max traveling speed: 600mm/s
Acceleration	Max acceleration: 20000mm/s ²	Max acceleration: 20000mm/s ²
Build Plate	Flexible removable PEI steel plate	Flexible removable PEI steel plate
Display Screen	4.3-inch	4.3-inch
Device Size	380*400*453mm (excluding the spool holder)	363*376*413mm (excluding the display screen and spool holder) 363*402*448mm (including the display screen, excluding the spool holder)
Power Supply	AC 100~240V, 50/60Hz, 350W	AC 100~120 / 200~240V, 50/60Hz, 350W
Compatible Slicing Software	FlashPrint/Prusa Slicer/Cura/Orca Slicer	FlashPrint/Prusa Slicer/Cura/Orca Slicer
Air Filtration	Internal circulation + external circulation (HEPA 13 + activated carbon)	/
Shell	Enclosed	Open
Noise	Low-noise mode: 50dB; Standard mode: 55dB	/
Connectivity	Wi-Fi; Ethernet; USB	Wi-Fi; Ethernet; USB
Other Functions	Camera monitoring; Filament run-out reminder; Automatic shutdown; Power loss recovery	Filament run-out reminder; Power loss recovery

